



MONTHLY MEMBERSHIP PROGRESS REPORT

District 2 T3

Results as of: 5/31/2017

GMT: HAL GRIFFIN

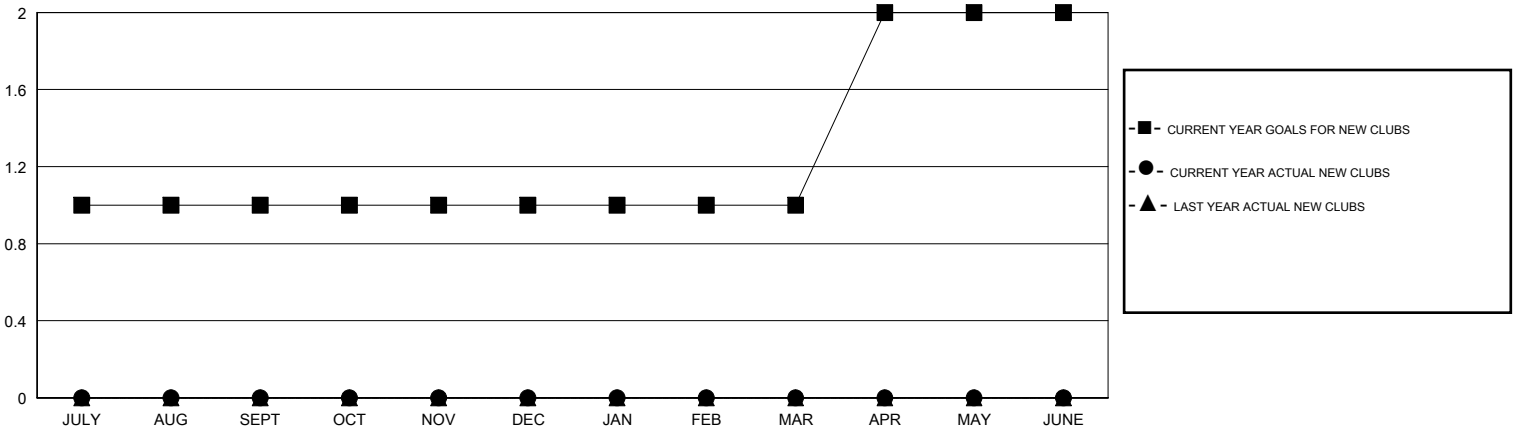
LOCATION TEXAS

GMT CA

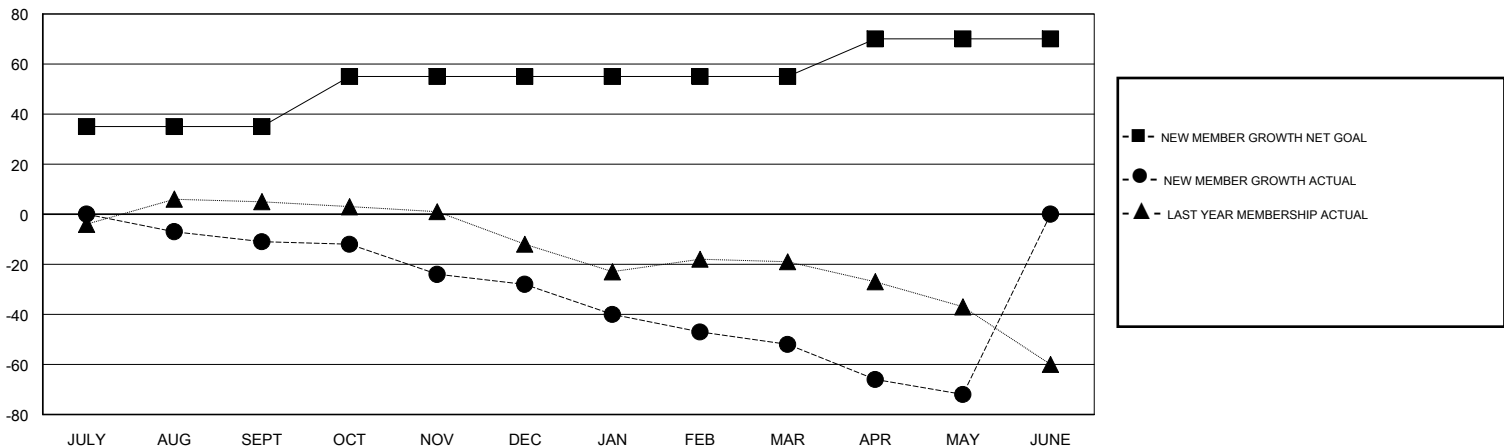
| Clubs | | | |
|-----------------------|---------------|-----------|---------------|
| RESULTS FOR 2016-2017 | | | |
| QUARTER | NEW CLUB GOAL | NEW CLUBS | DROPPED CLUBS |
| JULY/AUG/SEPT | 1 | 0 | 0 |
| OCT/NOV/DEC | 0 | 0 | 0 |
| JAN/FEB/MAR | 0 | 0 | 2 |
| APR/MAY/JUNE | 1 | 0 | 0 |

| Members | | | |
|-----------------------|--|--|--|
| RESULTS FOR 2016-2017 | | | |
| QUARTER | NEW MEMBER GROWTH NET GOAL (not reinstated or transfers) | NEW MEMBER GROWTH ACTUAL (not reinstated or transfers) | DROPPED MEMBERS ACTUAL (including transfers) |
| JULY/AUG/SEPT | 35 | 15 | 26 |
| OCT/NOV/DEC | 20 | 16 | 33 |
| JAN/FEB/MAR | 0 | 22 | 46 |
| APR/MAY/JUNE | 15 | 5 | 25 |

GOALS AND ACTUAL NEW CLUBS CUMULATIVE



GOALS AND ACTUAL MEMBERS CUMULATIVE



| | | |
|------------------|---|------------------------------------|
| DROPPED CLUBS: 2 | 18 CLUBS OF 33 ADDED 1 OR MORE NEW MEMBERS | GENDER DISTRIBUTION |
| DROPPED MEMBERS | CLICK HERE FOR CUMULATIVE MEMBERSHIP DATA | MALE 437 (61.12%) |
| DECEASED 18 | | FEMALE 278 (38.88%) |
| CLUB CANCELLED 2 | | TOTAL FAMILY UNIT MEMBERS 101 |
| OTHER 110 | | FAMILY MEMBERS PAYING HALF DUES 53 |
| TOTAL 130 | | |